



IDENCY[®]
SCAN
Secure your digital world

IdencyScan Install/User Guide



Table of Contents

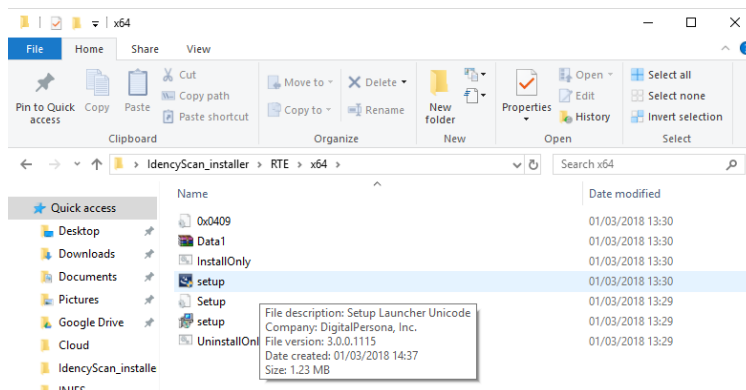
DigitalPersona RTE install.....	2
Installing IdencyScan.....	3
Capturing a Fingerprint	4

Installing the DigitalPersona RTE

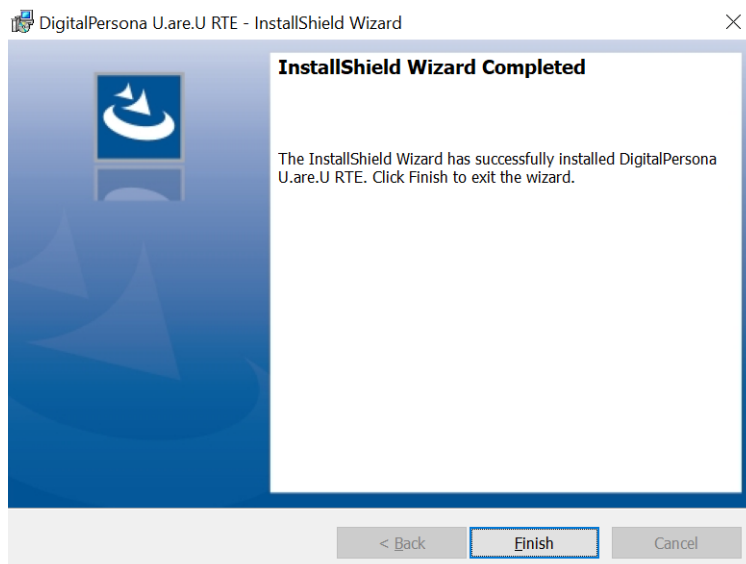
DigitalPersona RTE install

NOTE: Please install the RTE prior to installing IdencyScan program, this is to avoid any driver issues.

1. Open the IdencyScan Folder and open the file called RTE
2. Open the folder called X64
3. Run the setup as highlighted in the image. Follow the install wizard



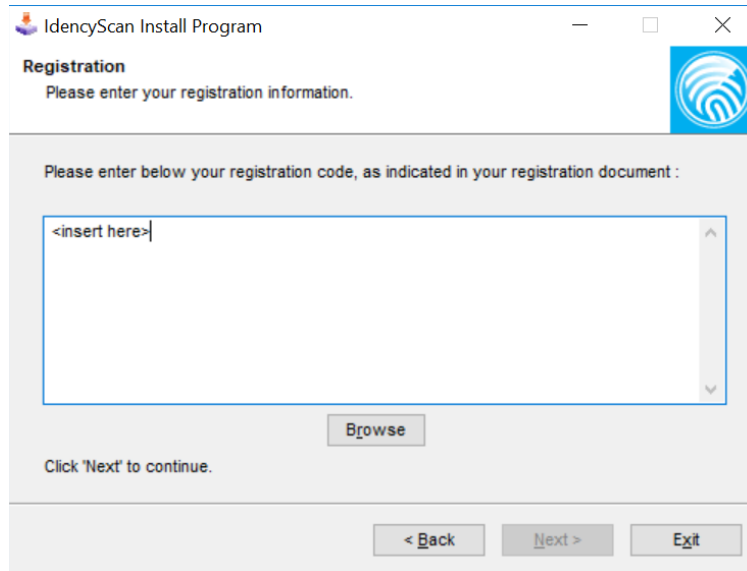
4. Select the complete option when choosing the setup type
5. Upon completion you will see the window below



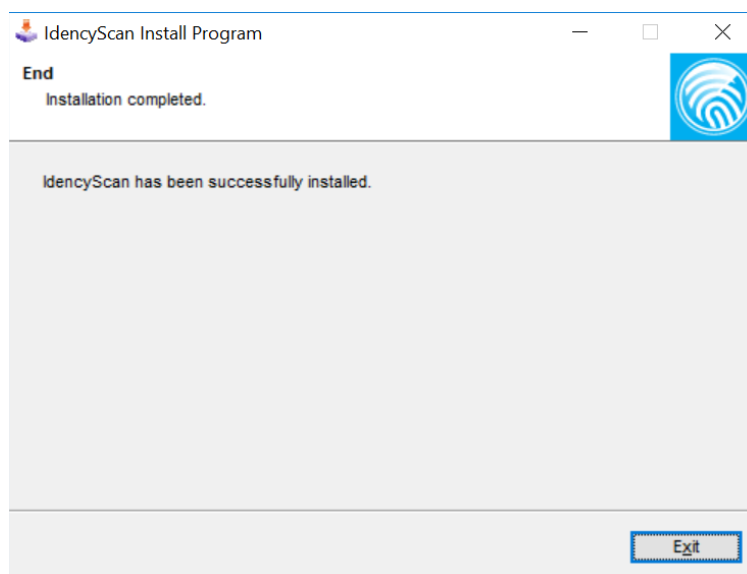
6. You will need to perform a restart of your system after installation so the drivers can work properly

Installing IdencyScan

1. Open the IdencyScan folder and run Setup.exe
2. Follow the install wizard



3. Once you reach the registration window please copy and paste the license into the space provided
4. Once you have entered a valid license continue to follow the install wizard
5. To initialise the install press, start. This will begin the install process
6. A successful install will display this screen



Capturing a Fingerprint

Note: Please insure that you have plugged in the DigitalPersona U.are.U 4500 and it is displaying a blue LED.

1. Press “Select Reader” button
2. This will then open a window, from the dropdown menu. If the device does not display try and refresh the list using the “Refresh List” button
3. Once a reader is selected press the “Select” button
4. You will then be taken back to the main menu. You will notice the capture button is now green
5. Press the “Capture” button. This will open the capture window
6. Place your finger on the reader. You will then see your finger on screen. If you want to save that image press the “Capture” button, choose the save location and name the image file

