

Manage every endpoint

BlackBerry Enterprise Mobility Suite – Management Edition

Keep IT in control of the entire mobile fleet, and get users started with mobile productivity. Users get access to secure browsing, critical web applications and cloud services whenever they need it. Meanwhile, IT can deploy and manage all devices – across platforms and ownership models. IT can set policies and device restrictions, manage whitelists, blacklists and other app controls, and report on app installations. They can even configure and secure key services, like Exchange, ActiveSync® and Wi-Fi®.

Manage and support all devices and OS's with one solution.



What's in it for users?

Mobile productivity with native email, plus secure access to corporate intranets, web apps and cloud services.

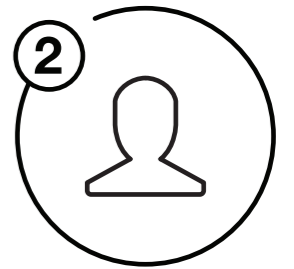
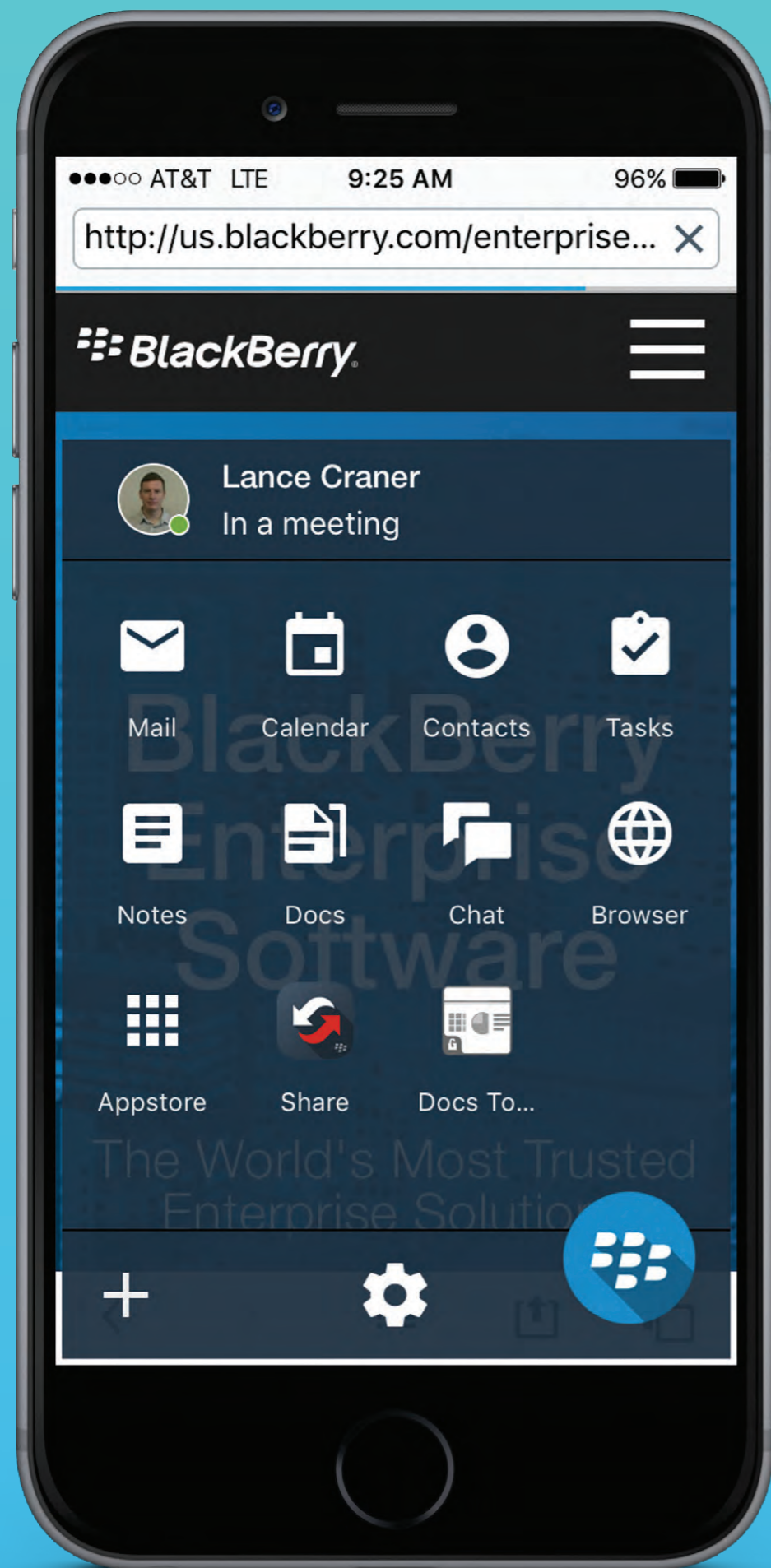
What's in it for IT?

A single solution that supports the entire mobile fleet across all ownership models.

What's in it for your business?

Get users started with basic mobile services as mobile strategies evolve.





Secure access to corporate information

BlackBerry Enterprise Mobility Suite – Enterprise Edition

Boost user productivity, with mobile access to key business tools – like email, calendars, contacts, tasks and documents – that integrate for a seamless work experience.

- › Empower users with an integrated collaboration environment, specifically built for business
- › Access a unified launchpad for apps and tasks
- › Provide secure access to apps, intranets and cloud services
- › Leverage secure connectivity that protects the network
- › Keep business data safe with secure apps and advanced data loss prevention policies
- › Enable mobile capabilities that aren't available in consumer email apps
- › Avoid intrusive geo-location or whole device-wipe techniques
- › Protect against data leakage with containerization for all devices

What's in it for users?

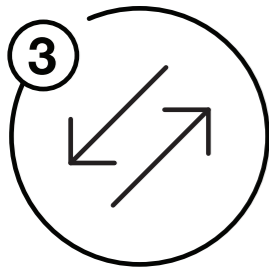
Get work done anywhere, anytime, and on any device – with tools built for business productivity.

What's in it for IT?

Say “yes” to mobile productivity, knowing that data is always protected in a secure container.

What's in it for your business?

Drive mobile work efficiencies that accelerate user adoption of mobility as a workplace tool.



Collaborate from anywhere

BlackBerry Enterprise Mobility Suite – Collaboration Edition

Unlock the power of a fully connected workforce. Give users secure access to critical Microsoft and third-party apps, so they can collaborate freely from any device. BlackBerry® Enterprise Mobility Suite – Collaboration Edition offers a completely secure app environment, protecting data in use, at rest and in transit.

- › Extend secure email capabilities with seamlessly integrated IM, notes and document workflows
- › Securely access enterprise file repositories like SharePoint, Box and OneDrive
- › Provide high-fidelity document editing capabilities, PDF conversion and .zip file support
- › Let users collaborate in real-time with secure instant messaging for MS Lync, Skype for Business on premises, IBM Sametime and Cisco Jabber environments
- › Accelerate sales cycles with secure mobile CRM access
- › Leverage ISV ecosystem partners to mobilize critical applications and processes, including Oracle, IBM, Microsoft, HP, DocuSign, Qlik and more

What's in it for users?

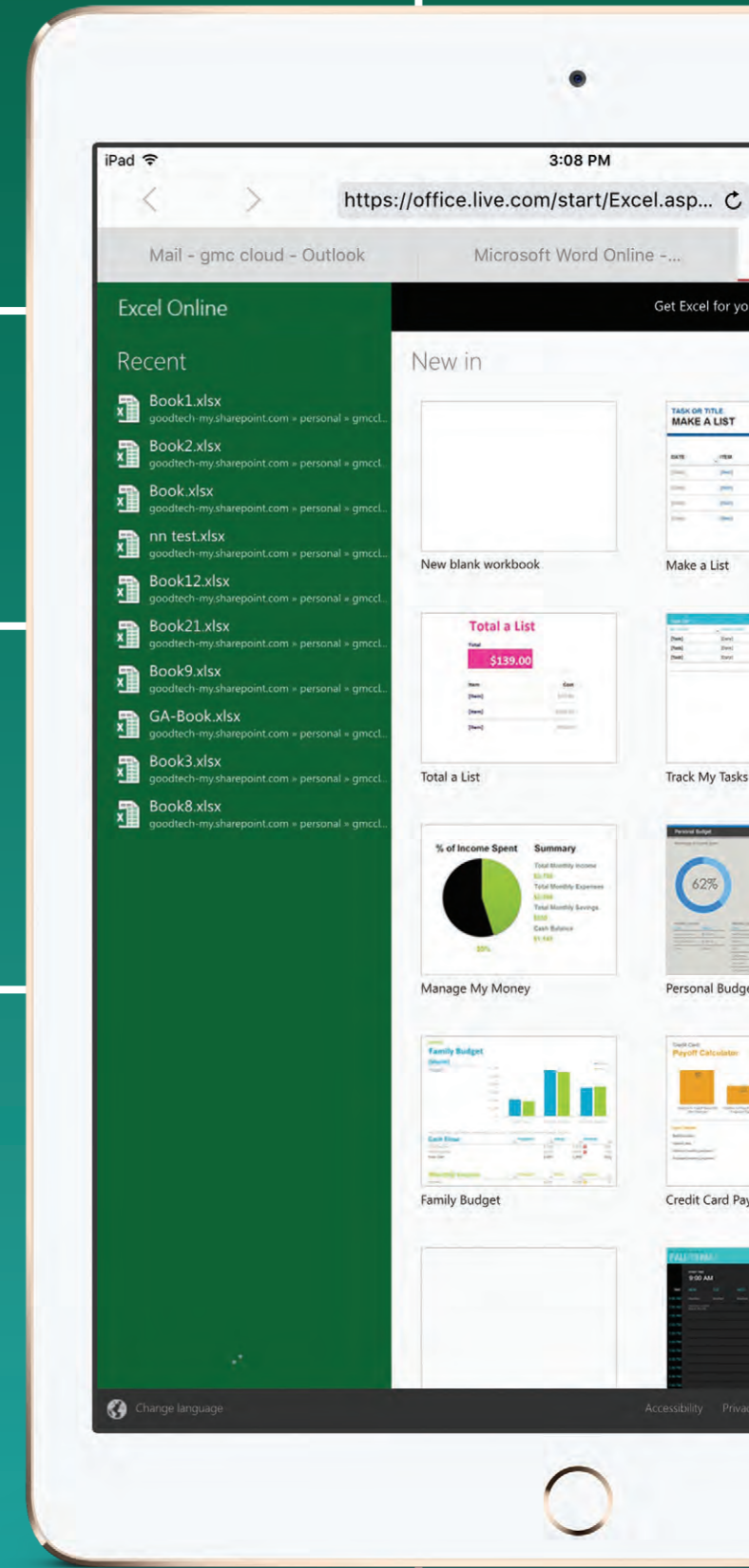
Communicate and collaborate, work with documents and access key business systems from anywhere.

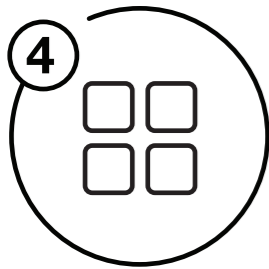
What's in it for IT?

Supercharge mobile user productivity while keeping business data and systems secure.

What's in it for your business?

Take mobile productivity to the next level by mobilizing sales teams and field forces, empowering document workers, and facilitating executive communications.





Customize apps for your business

BlackBerry Enterprise Mobility Suite – Application Edition

Improve business agility by empowering app owners, app developers and IT to focus on what they do best – building efficient business tools. BlackBerry Enterprise Mobility Suite – Application Edition enables IT to securely manage apps and content, ensures the reliability of mobile services, and speeds development with security and platform capabilities that developers can reuse. With BlackBerry Analytics you can leverage track user engagement with your apps, to make data driven decisions about future app development.

- › Accelerate app projects with native development or common frameworks, like Adobe Phonegap and Xamarin
- › Develop apps faster with reusable security and other shared services in a service-oriented architecture (SOA) model
- › Securely manage and support key mobile apps
- › Integrate new apps with existing apps and business systems
- › Leverage strong authentication and identity federation to offer secure SSO mobile apps and services

What's in it for users?

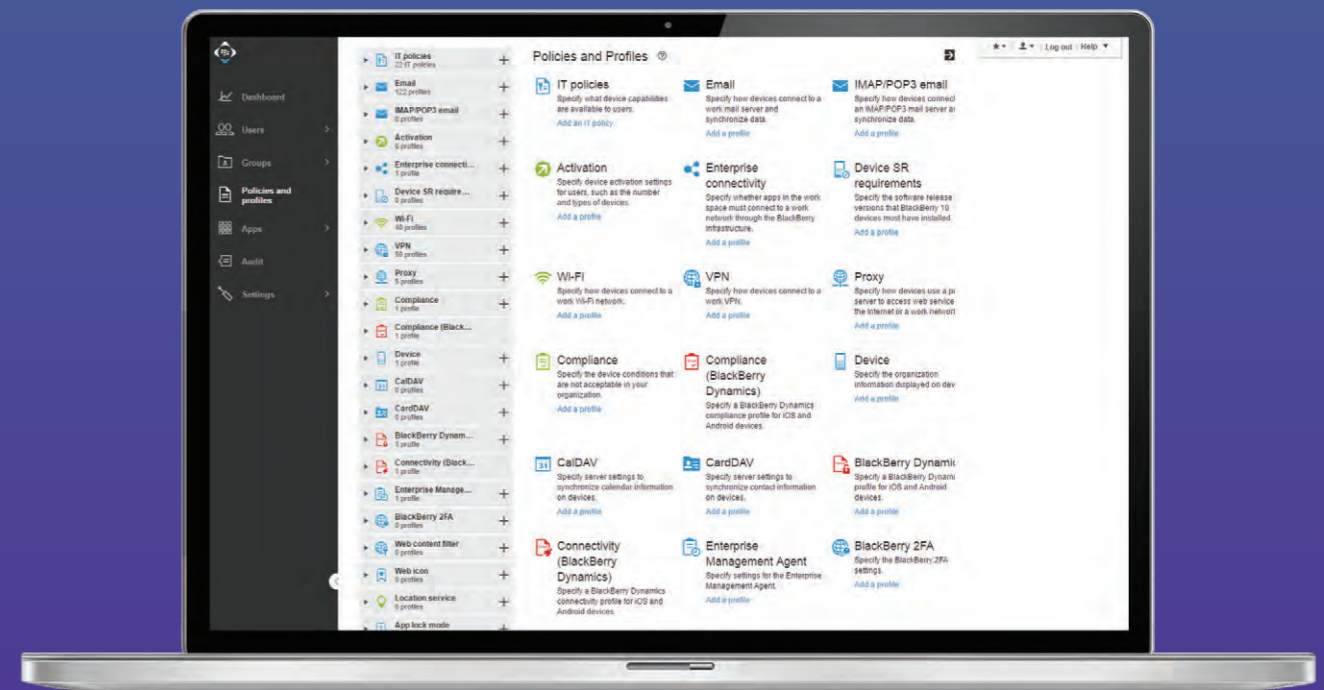
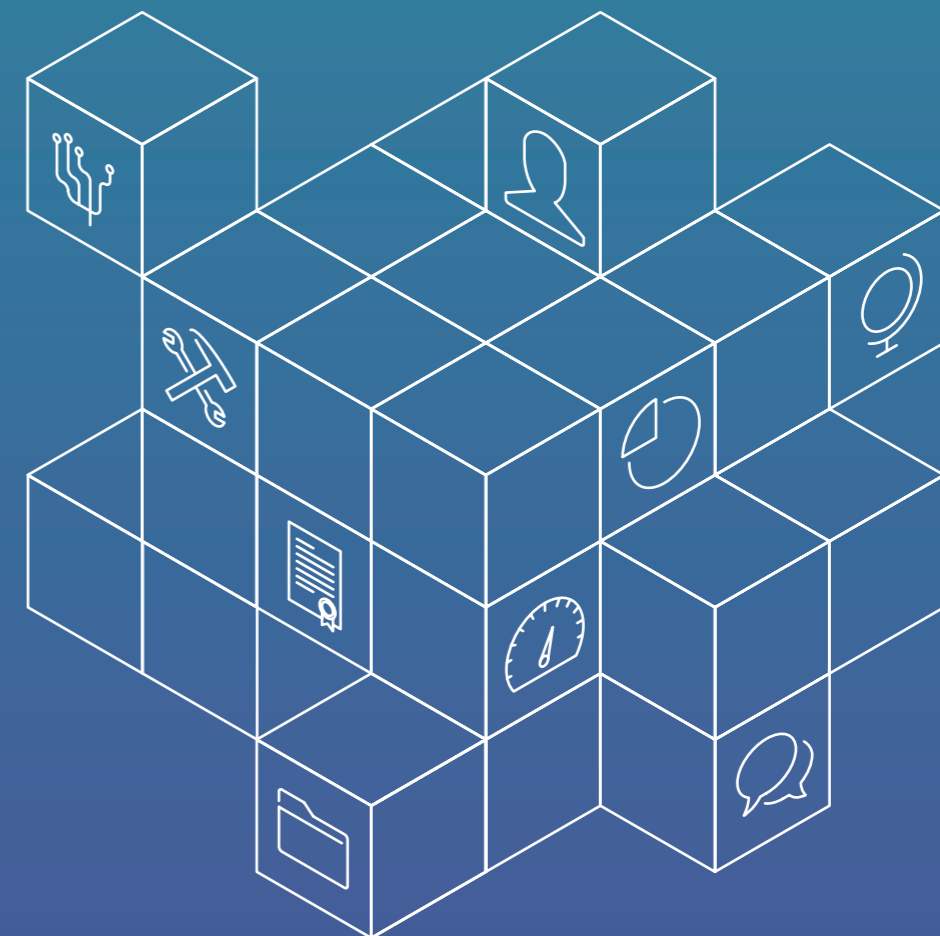
Get apps that let them do more on their mobile devices.

What's in it for IT?

Ensure consistent security and management across a growing set of apps, without becoming a gatekeeper.

What's in it for your business?

Use apps and analytics to change key business processes and promote user productivity.





Protect your data wherever it goes

BlackBerry Enterprise Mobility Suite – Content Edition

As your mobility program reaches critical mass, corporate data and documents are moving everywhere – between smartphones, tablets, computers, cloud services and servers. BlackBerry Enterprise Mobility Suite – Content Edition gives you a complete enterprise file sync and share solution, with full digital rights management (DRM) security that ensures control in a world where mobility and cloud services are everywhere.

- › Equip your business with BlackBerry Workspaces™, the leader in secure enterprise file synchronization and sharing (EFSS)
- › Apply DRM security that follows a file everywhere it goes – even after it leaves your firewall
- › Control users' ability to access, view, edit, copy, print or forward files
- › Empower users with the ability to collaborate on files from any device
- › Track or revoke user permissions at any time
- › Integrate Workspaces DRM with your current repositories and tools, including Microsoft Outlook, SharePoint, and Salesforce

What's in it for users?

The freedom to share content anywhere it's needed to get the job done.

What's in it for your IT?

Secure intellectual property and customer data while maintaining visibility and control.

What's in it for your business?

Unlock users' full productivity potential, while taking control of your content.

Find the right Edition to match your business at blackberry.com/suite.

