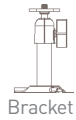


Quick Start Guide

Connecting the camera to the Smart-i Cam App

System Components

Bullet Camera
SHC300



Bracket



Antenna



Adaptor DC 5V/1.5A



USB to RJ45 Lead



Manual & QSG (x2)

NOTE: For video recording, use a CLASS 10 memory card or better (not included). Other kinds of memory card may cause unexpected results and should be avoided.

Setup the Camera

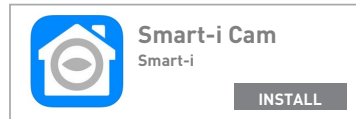
App Download

Download the App from AppStore/GooglePlay
App Name: Smart-i Cam

Google Play: <https://play.google.com/store/apps/details?id=com.y3k.p2pcamera&hl=en>

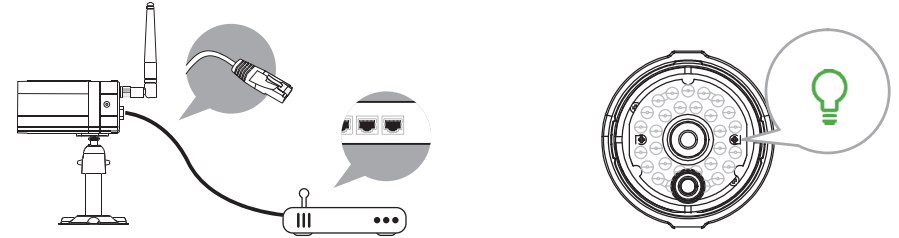
App Store: <https://itunes.apple.com/us/app/smart-i-cam/id1067726770?ls=1&mt=8>

Supports Record, Playback, Motion and 2 way Audio - For additional features you will require the SmartBox Gateway.



3 ways to connect

1. Connect with Ethernet cable



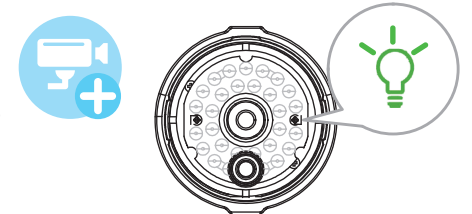
(1) Connect your mobile device to your router WiFi. Connect camera to your home WiFi router using Ethernet cable then power on the camera. Camera will take 40 seconds to connect to router, when done the Green LED will stay ON.

(2) Open the App, tap the "Search" button to locate the camera. Once found enter the default password **123456**. Then save the settings. If you want to connect your IPC to your routers WIFI please follow Step 3.

NOTE: Camera ID (DID) is a set of alphanumeric characters that you can find on camera body. Please make a note of the Camera ID when you complete the settings.

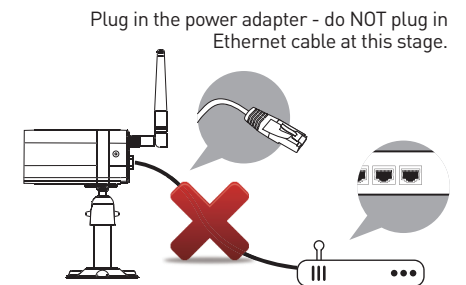
2. WiFi Direct

(1) Power up the Camera - Once powered it normally takes less than 1 minute for the green LED to start a sequence of one long flash followed by 3 short flashes. Once this happens the camera is ready for direct wireless connection.



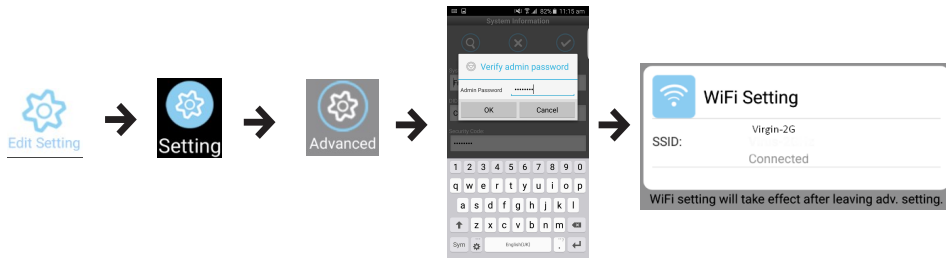
(2) Go to the WiFi settings on your mobile device. Choose the WiFi ID with prefix of HD-xxxxxx (xxxxxx=Camera ID numbers). Enter the default password **12345678** and save the settings.

(3) Open the App, tap the "Add Camera" icon and then "search" icon. The camera ID will show up. Enter the default password **123456** and save the settings. When the Green LED long flashes once followed by 2 short flashes, it means the direct wireless connection is established. You'll see the camera view appear.



3. WiFi to your router

Follow the steps below to add the camera to your WiFi - Open App and click:

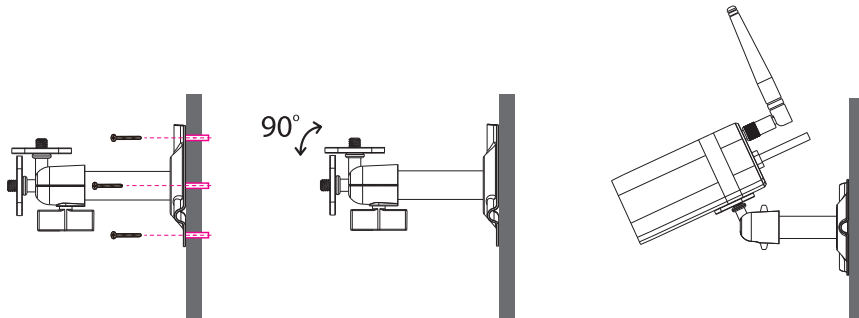


- (1) Tap on Edit Settings - Settings - Advanced (Enter your camera password default: 123456) - WiFi setting. Then choose your SSID(This is your routers name) and enter your routers WiFi password.
- (2) Remove the Ethernet cable connecting your camera to your router.
- (3) The camera will be offline for around 40 seconds whilst it reboots to establish WiFi connection. When the camera connects to WiFi router correctly, the green LED will stay ON.

NOTE: 1. WiFi setting may fail if you leave the Ethernet cable connected. Please remove the cable after settings have been completed.
 2. The camera will only accept an SSID composed with English alphabet characters and numbers (case sensitive), non-English and special characters (!@#\$%, etc) will not be accepted. Make sure to insert dashes [-].

If the camera fails to connect to the assigned WiFi router, you need to redo the settings again. On the power cable you'll find a small indented button. Hold it down for 5 seconds and you should see the cameras lights flash in sync. Please repeat the steps above.

Camera Installation

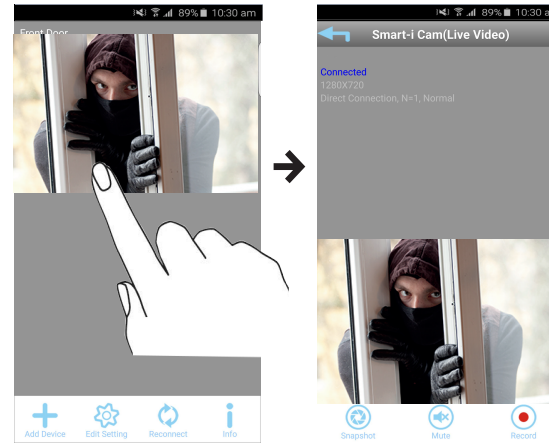


- (1) Secure the camera bracket on a stable surface
- (2) Loosen up the thumb screw
- (3) Adjust viewing angle, then secure by tightening the T-bolt.

Camera Settings/Email Alerts

NOTE: Micro SD card required for Snapshot, Playback and Download features.

Live View



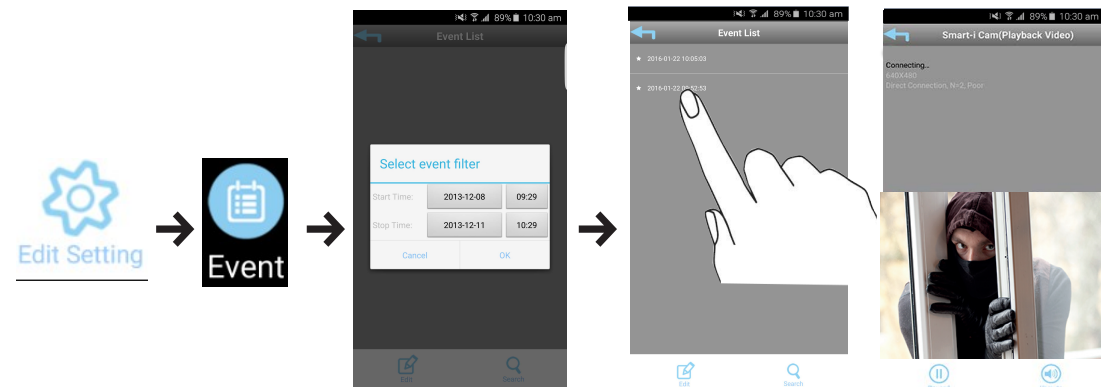
Snapshot

- Tap to capture screen images.
- Tap to record video to device memory card.
- Tap to mute audio.
- Tap to return to the main page.

Note: The image shown is static until you click on it and then you will be prompted to change the default password. Please keep the new password safe.

Playback

- (1) Tap Edit Setting and then the Event icon.
- (2) Select the time interval for the event list.
- (3) Tap the file that you want to playback from the list.

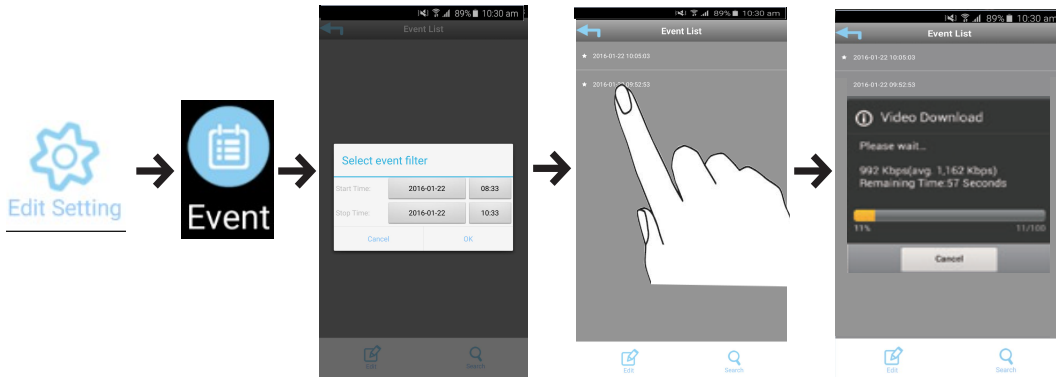


Download

(1) Tap Edit Setting and then the Event icon.

(2) Select the time interval for the event list.

(3) Press and hold the video clip to download to your device



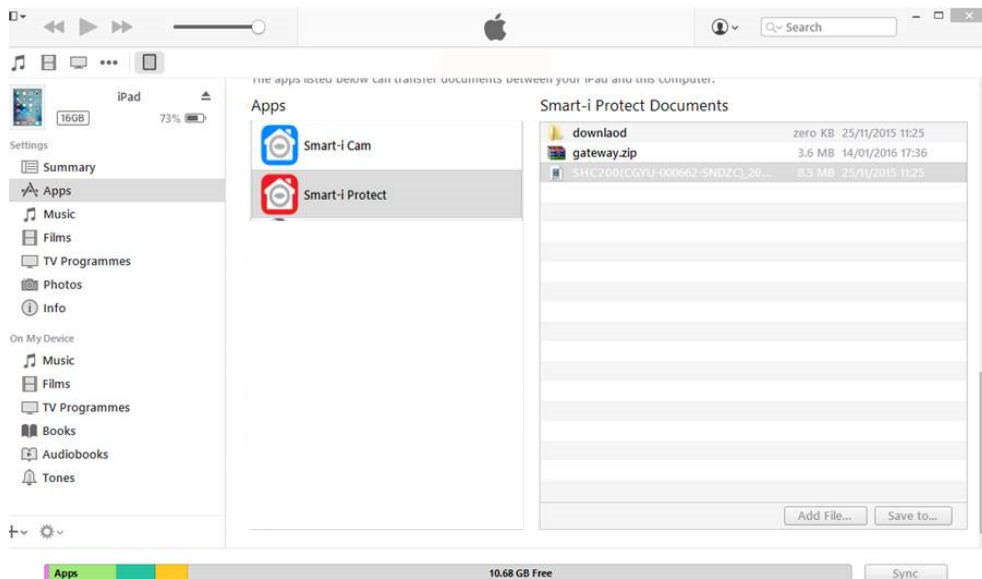
For better playback performance -

Android users: Use [MX player] app (software decoder) to playback. It is a free app on Google Play. You can also use VLC player. This video will be stored on the external SD card (folder SCH).

Note: You cannot change the storage location.

iOS users: Use [Oplayer Lite] app to playback. It is a free app on App store.

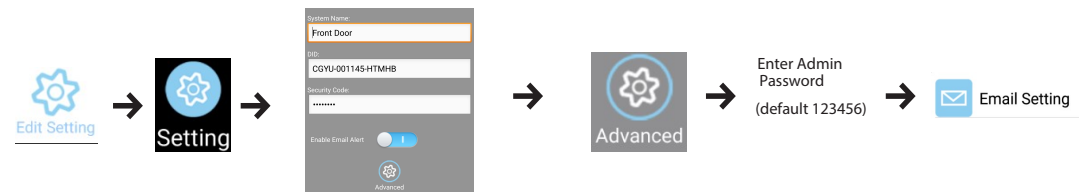
To extract the videos from your Apple device you must use iTunes (See below).



Email Alerts

The camera has a motion detection function, which can notifying the user when triggered. When motion detection is enabled and camera detects movement:

- Camera will begin recording.
- With Push Notification enabled, the system will send a notification message to the user's mobile device.
- With Email Alerts enabled, the system will send out Emails to alert the user to the event. Enter your email details: Advanced -> Email -> Email Setting



Information :

Please change the below settings if you experience any problems with your image quality in your environment.

- Indoor 50hz for UK
- Indoor 60hz for US
- Outdoor

Factory Default Setting

Hold the black button located on the power lead for 5 seconds. Release and the camera lights should start flashing in sync.

For more information and Products available in the Smart-i Range please visit our website at <http://www.smart-i.com>