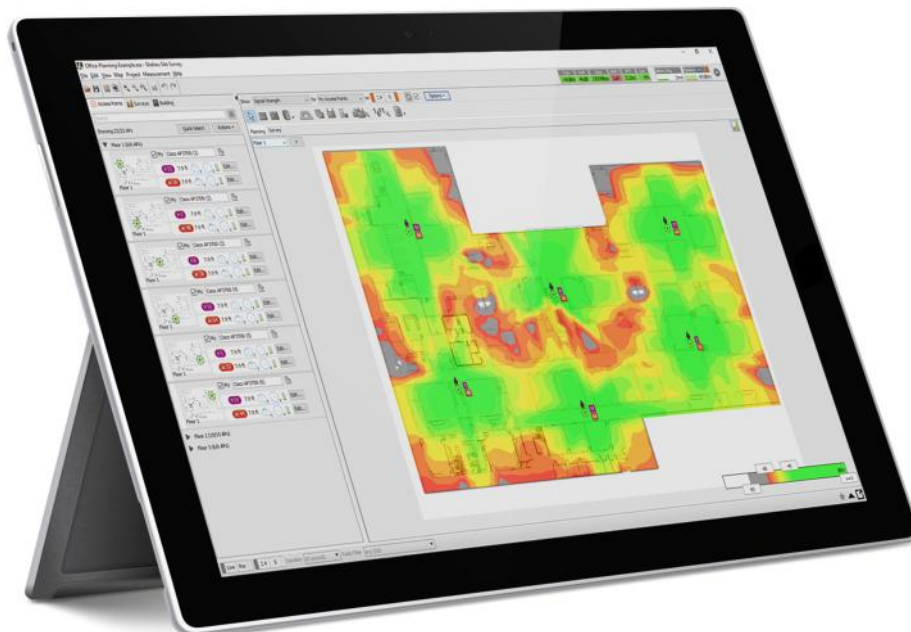


# Ekahau Heatmap Report

## Aerohive AP130 Access Points

1<sup>st</sup> November 2016



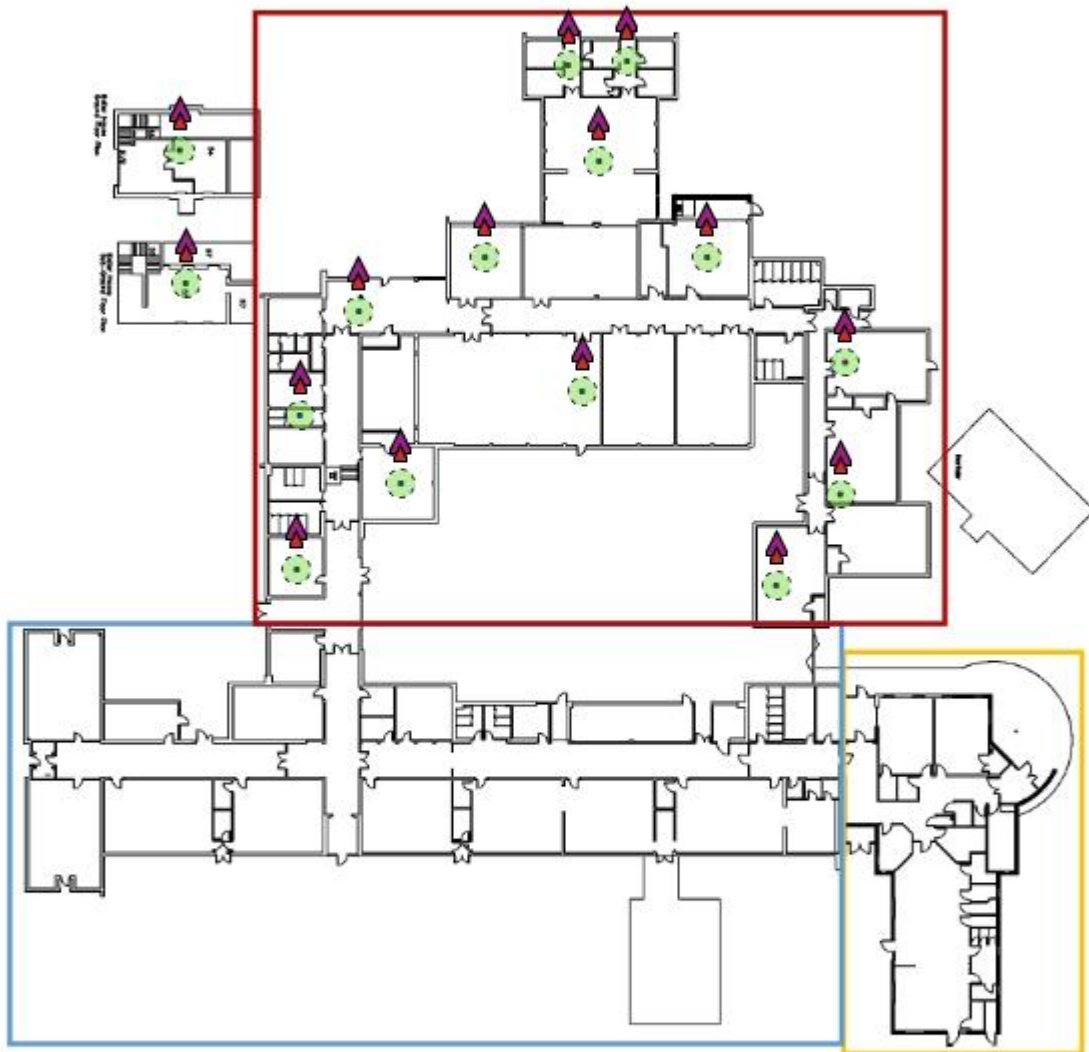
Name: - Ekahau Heatmap - 01-11-16




Notes: The requirement is to provide separate quotations for the areas marked KS1 and KS2. The Patch area is run separately from the KS1 and KS2 areas which should also be provided as a separate area. There is a large square in the centre which represents a mobile classroom. This will be gone by January 2017, so ignore it for the sake of wireless connectivity.

In the LA provided version of the plan, there is a large square in the centre which represents a mobile classroom. This will be gone by January 2017, so ignore it for the sake of wireless connectivity.

## 01 - - Plan - Zoned\_001 (KS1)

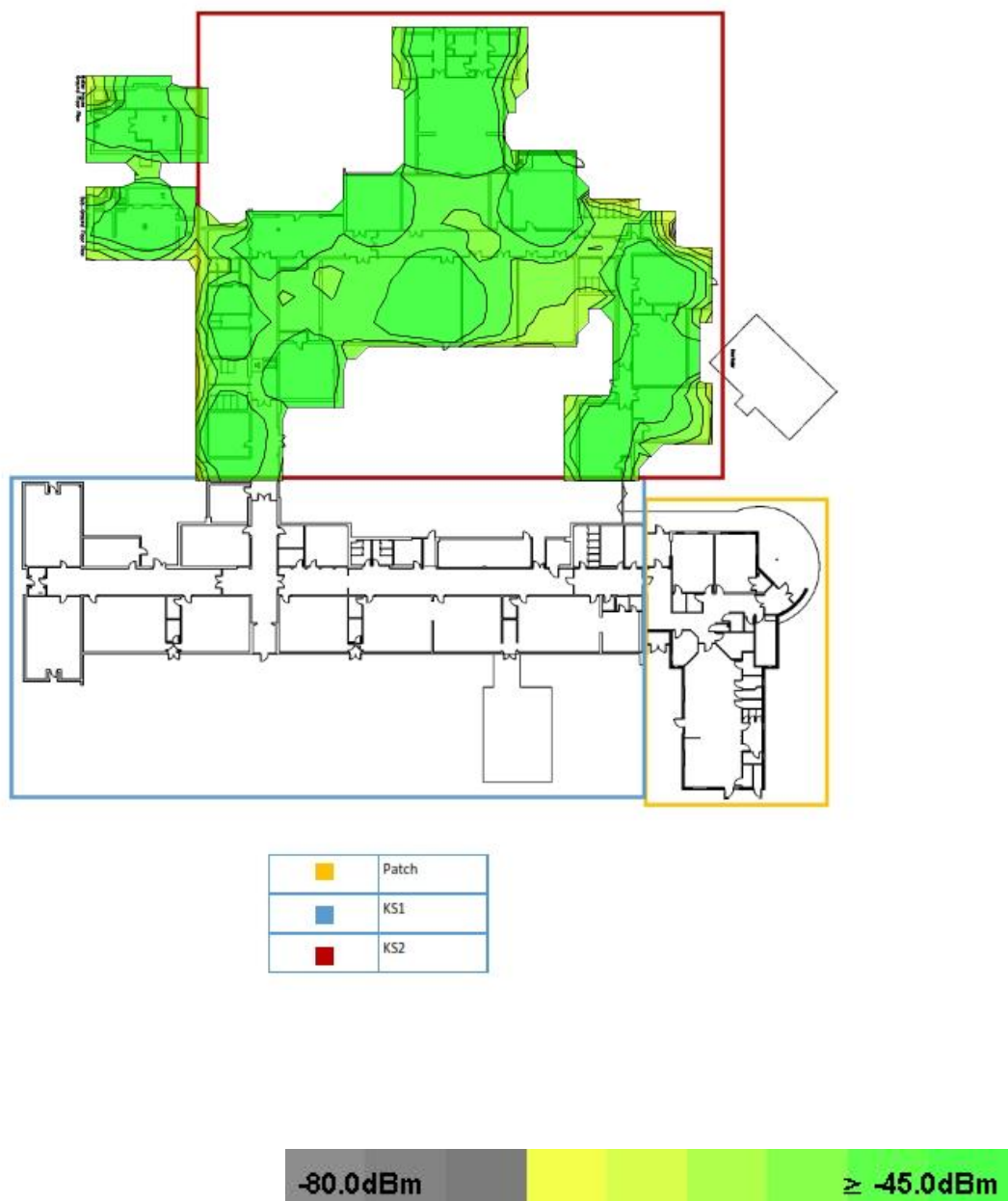
Survey routes and Access Points for 01 -



	Patch
	KS1
	KS2

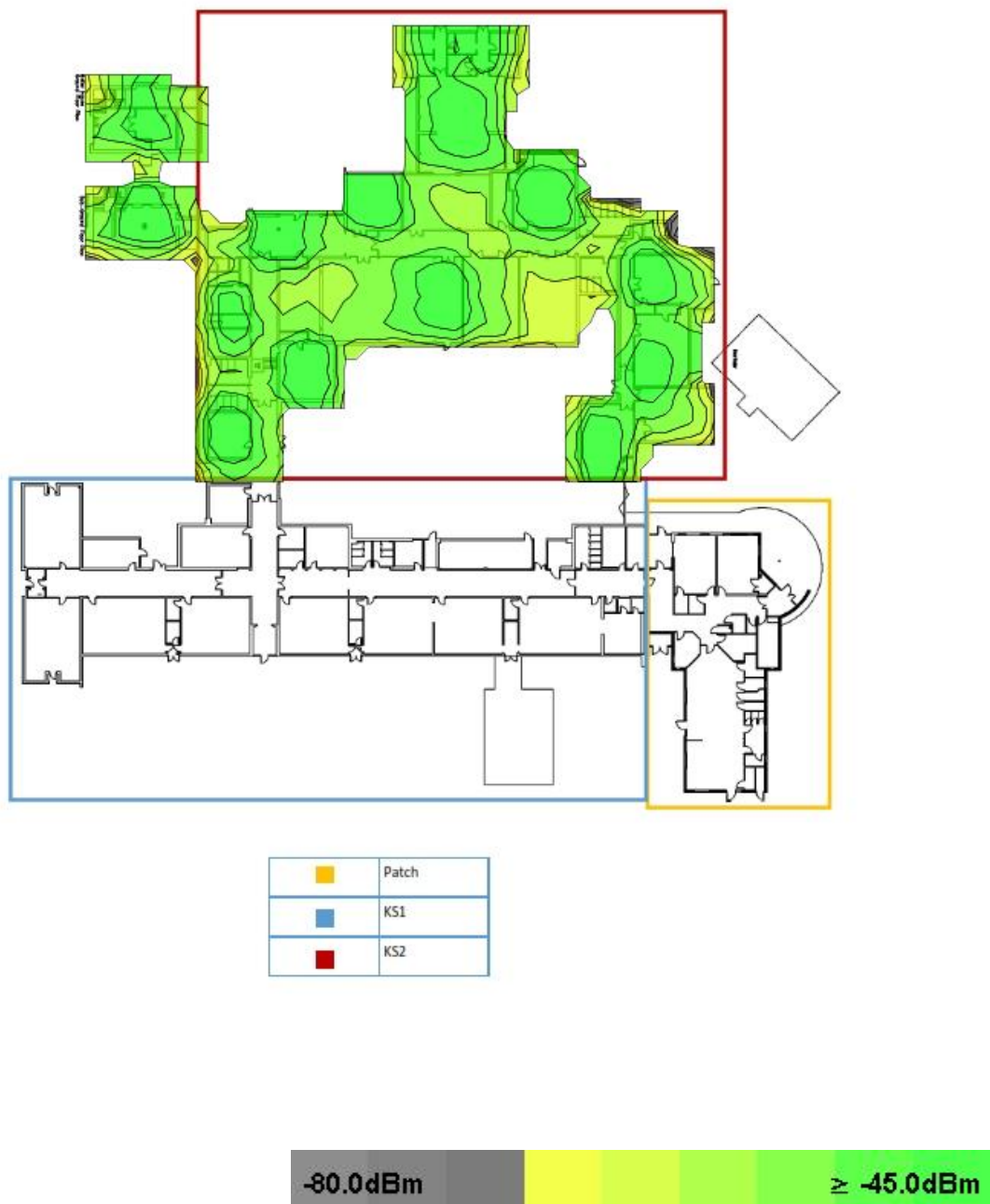
**Signal Strength for 01 - - Plan - Zoned\_001 (KS1) on 2.4 GHz band**

Signal Strength - sometimes called coverage - is the most basic requirement for a wireless network. As a general guideline, low signal strength means unreliable connections, and low data throughput.






**Signal Strength for 01 - - Plan - Zoned\_001 (KS1) on 5 GHz band**

Signal Strength - sometimes called coverage - is the most basic requirement for a wireless network. As a general guideline, low signal strength means unreliable connections, and low data throughput.



# Access Points on 01 - - Plan - Zoned\_001 (KS1)



	Patch
	KS1
	KS2

## My Access Points on 01 - Plan - Zoned\_001 (KS1)

### Simulated Access Points on 01 - Plan - Zoned\_001 (KS1)

AP #	Access Point			
1	Aerohive AP130 (01)			
	802.11n	1	25 mW	Aerohive AP130 2.4GHz
	802.11ac	36	25 mW	Aerohive AP130 5GHz
2	Aerohive AP130 (02)			
	802.11n	1	25 mW	Aerohive AP130 2.4GHz
	802.11ac	36	25 mW	Aerohive AP130 5GHz
3	Aerohive AP130 (03)			
	802.11n	1	25 mW	Aerohive AP130 2.4GHz
	802.11ac	36	25 mW	Aerohive AP130 5GHz
4	Aerohive AP130 (04)			
	802.11n	1	25 mW	Aerohive AP130 2.4GHz
	802.11ac	36	25 mW	Aerohive AP130 5GHz
5	Aerohive AP130 (05)			
	802.11n	1	25 mW	Aerohive AP130 2.4GHz
	802.11ac	36	25 mW	Aerohive AP130 5GHz
6	Aerohive AP130 (06)			
	802.11n	1	25 mW	Aerohive AP130 2.4GHz
	802.11ac	36	25 mW	Aerohive AP130 5GHz
7	Aerohive AP130 (07)			
	802.11n	1	25 mW	Aerohive AP130 2.4GHz
	802.11ac	36	25 mW	Aerohive AP130 5GHz
8	Aerohive AP130 (08)			
	802.11n	1	25 mW	Aerohive AP130 2.4GHz
	802.11ac	36	25 mW	Aerohive AP130 5GHz
9	Aerohive AP130 (09)			
	802.11n	1	25 mW	Aerohive AP130 2.4GHz

# Wi-Fi Network Report

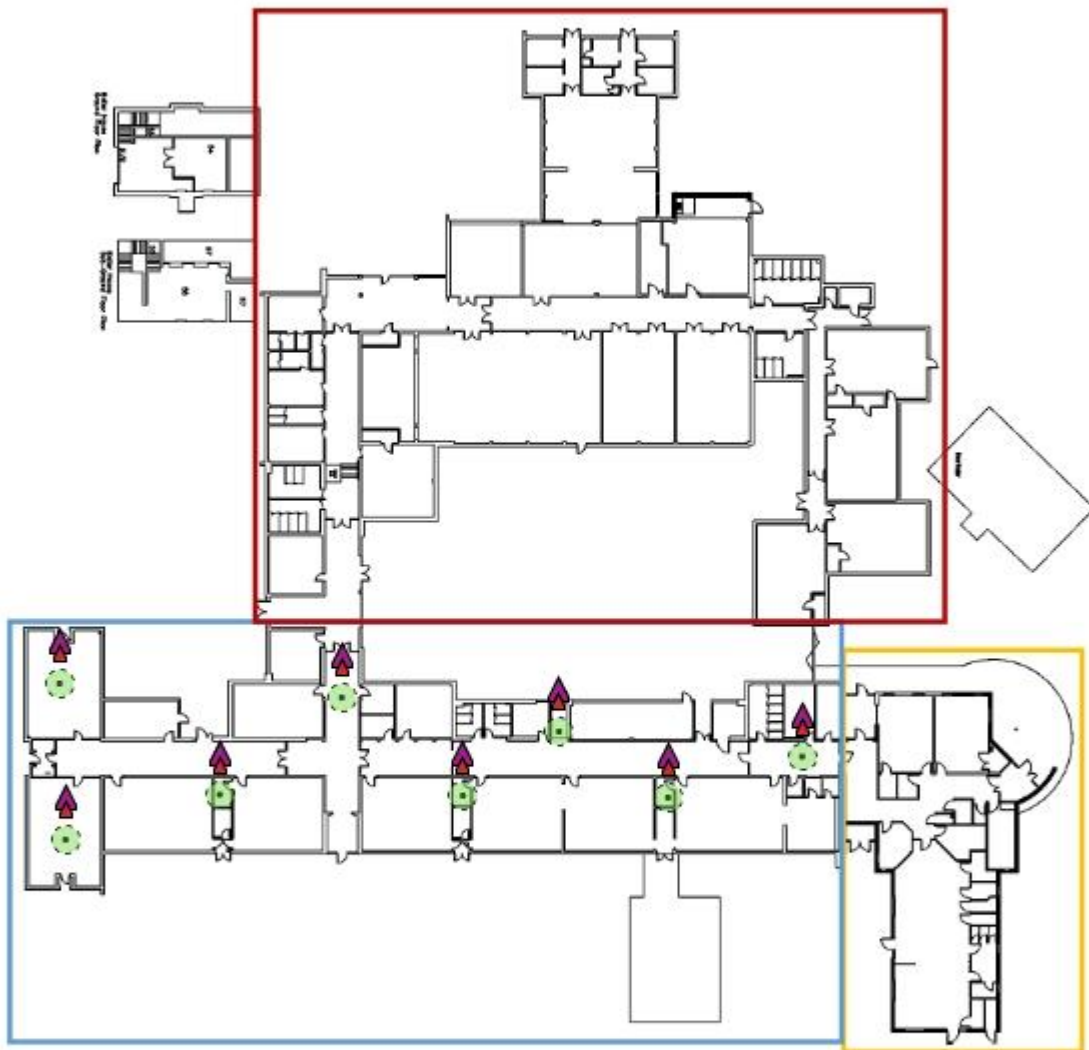
	802.11ac	36	25 mW	Aerohive AP130 5GHz
10	Aerohive AP130 (10)			
	802.11n	1	25 mW	Aerohive AP130 2.4GHz
	802.11ac	36	25 mW	Aerohive AP130 5GHz
11	Aerohive AP130 (11)			
	802.11n	1	25 mW	Aerohive AP130 2.4GHz
	802.11ac	36	25 mW	Aerohive AP130 5GHz
12	Aerohive AP130 (12)			
	802.11n	1	25 mW	Aerohive AP130 2.4GHz
	802.11ac	36	25 mW	Aerohive AP130 5GHz
13	Aerohive AP130 (13)			
	802.11n	1	25 mW	Aerohive AP130 2.4GHz
	802.11ac	36	25 mW	Aerohive AP130 5GHz
14	Aerohive AP130 (14)			
	802.11n	1	25 mW	Aerohive AP130 2.4GHz
	802.11ac	36	25 mW	Aerohive AP130 5GHz
15	Aerohive AP130 (15)			
	802.11n	1	25 mW	Aerohive AP130 2.4GHz
	802.11ac	36	25 mW	Aerohive AP130 5GHz




## Measured Access Points on 01 - Old Park - Plan - Zoned\_001 (KS1)

None.

## 02 - - Plan - Zoned\_001 (KS2)

Survey routes and Access Points for 02 - - Plan - Zoned\_001 (KS2)

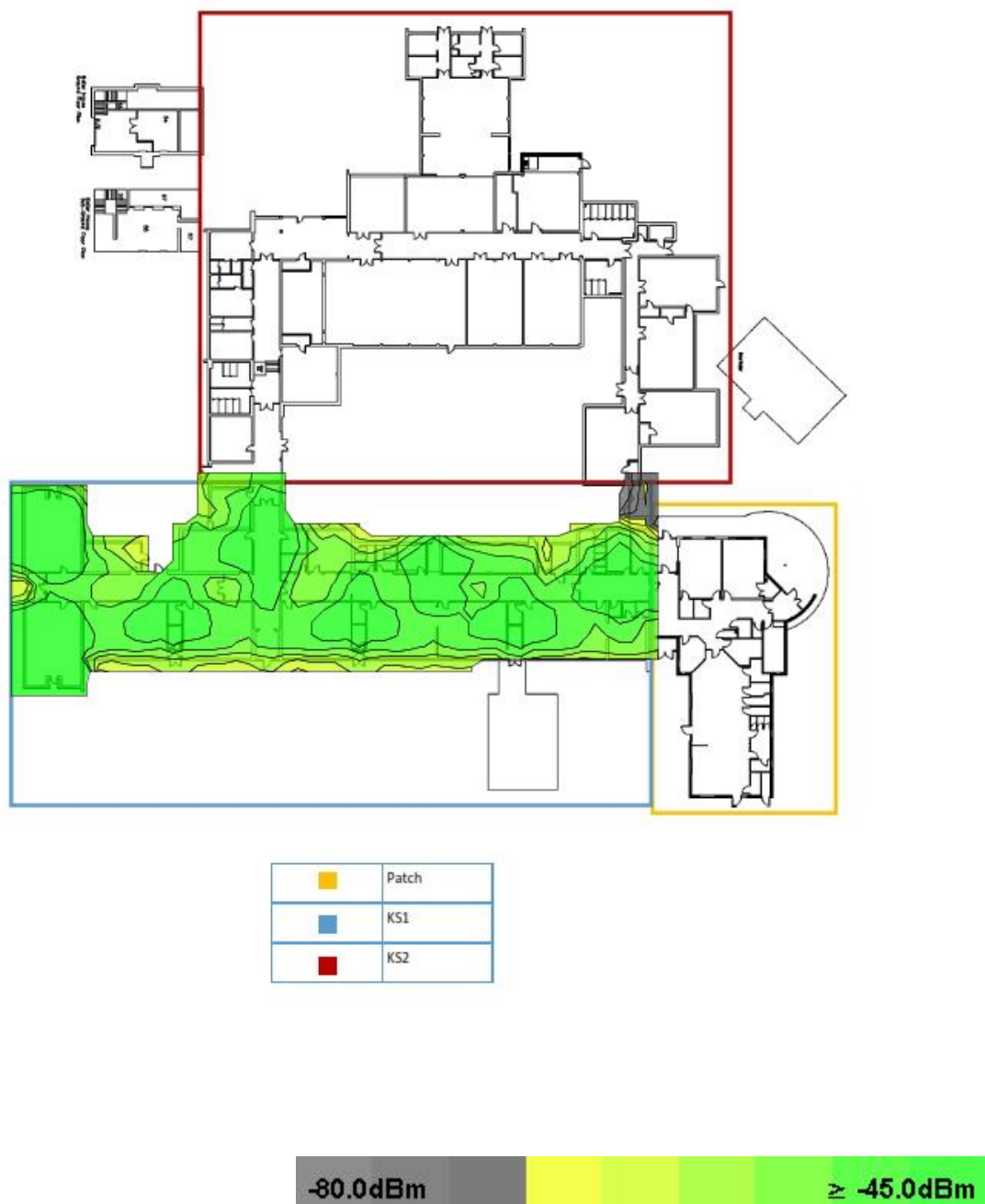


	Patch
	KS1
	KS2



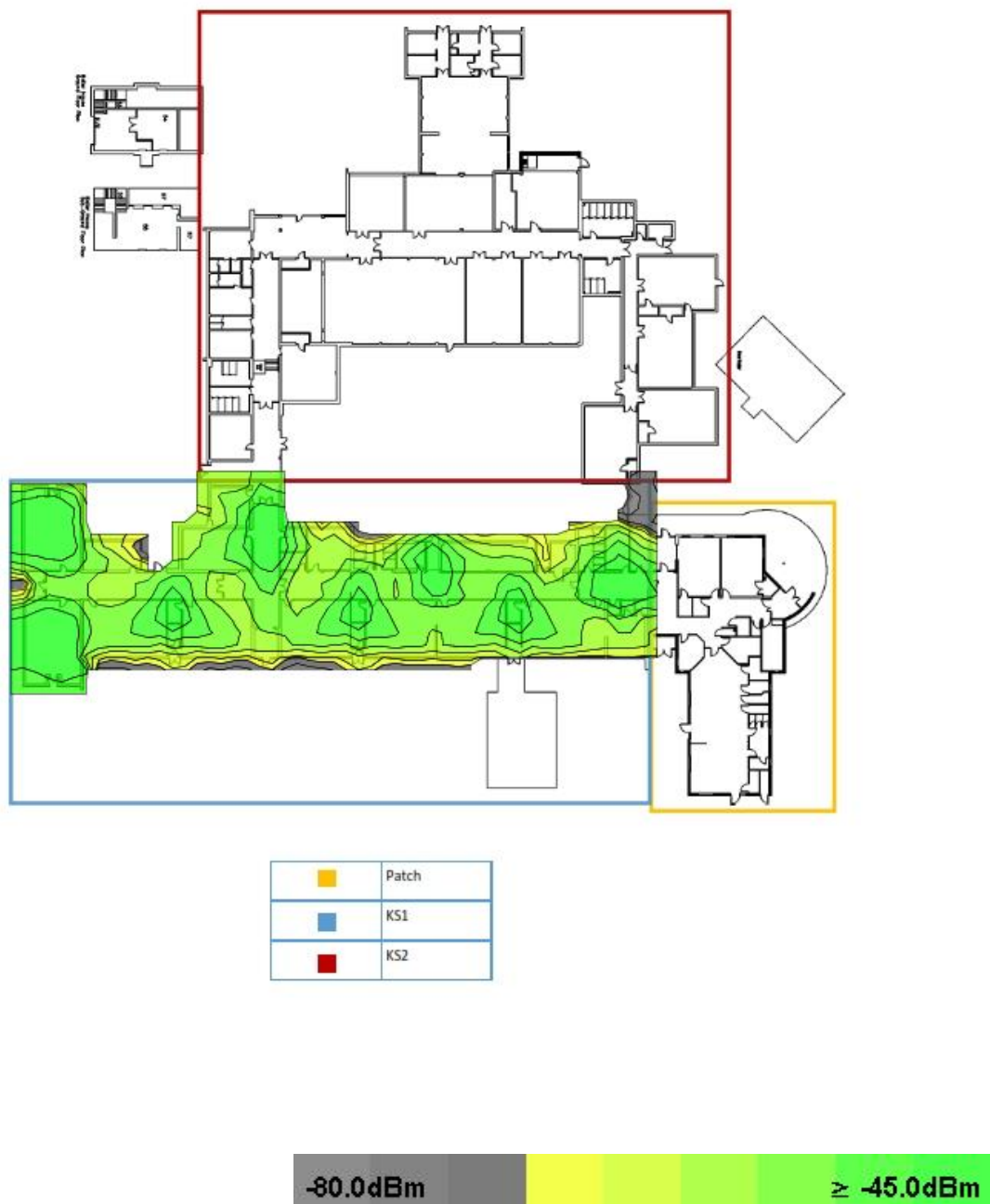
**Signal Strength for 02 - - Plan - Zoned\_001 (KS2) on 2.4 GHz band**

Signal Strength - sometimes called coverage - is the most basic requirement for a wireless network. As a general guideline, low signal strength means unreliable connections, and low data throughput.

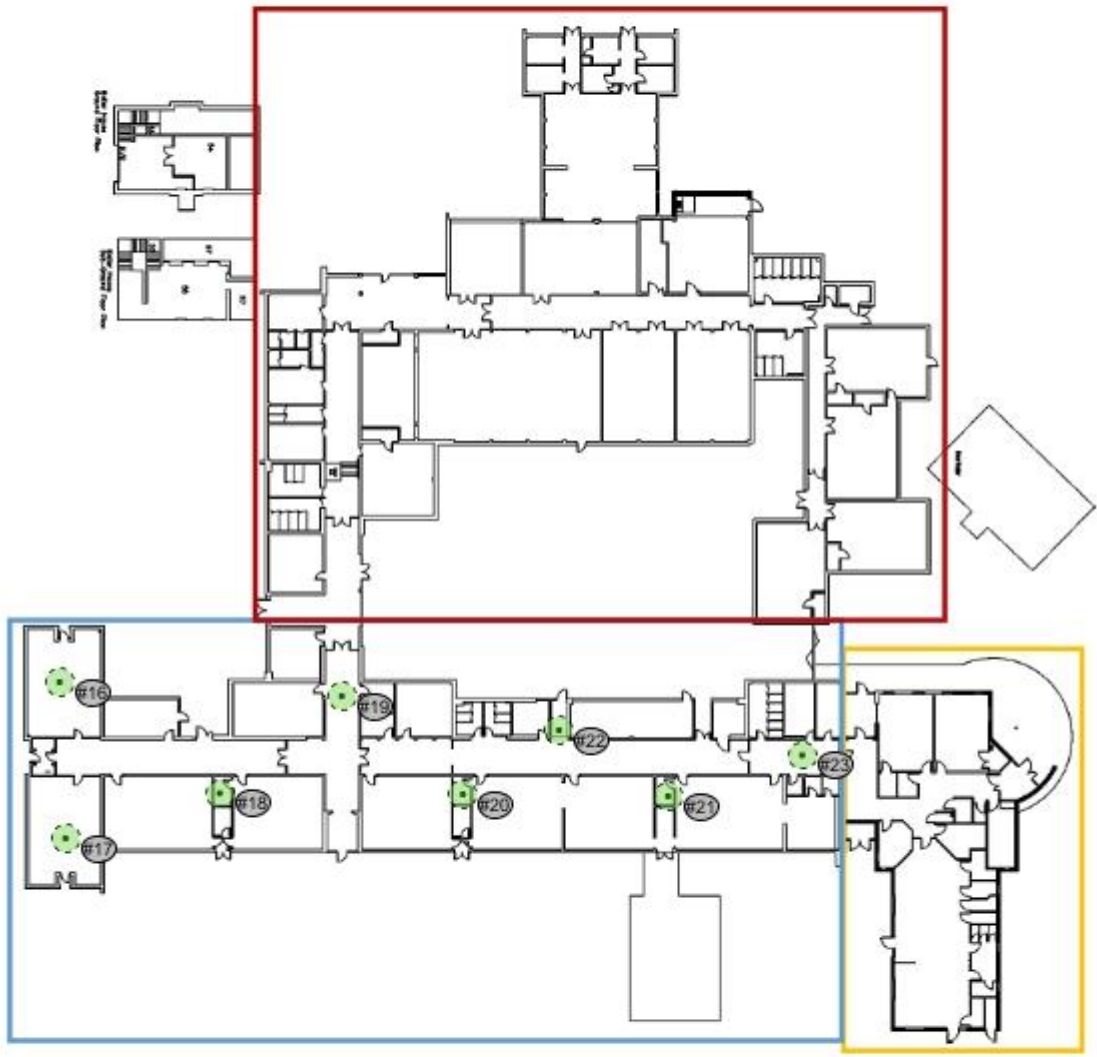





**Signal Strength for 02 - - Plan - Zoned\_001 (KS2) on 5 GHz band**

Signal Strength - sometimes called coverage - is the most basic requirement for a wireless network. As a general guideline, low signal strength means unreliable connections, and low data throughput.



# Access Points on 02 - Plan - Zoned\_001 (KS2)



	Patch
	KS1
	KS2

## My Access Points on 02 - Old Park - Plan - Zoned\_001 (KS2)

### Simulated Access Points on 02 - Old Park - Plan - Zoned\_001 (KS2)

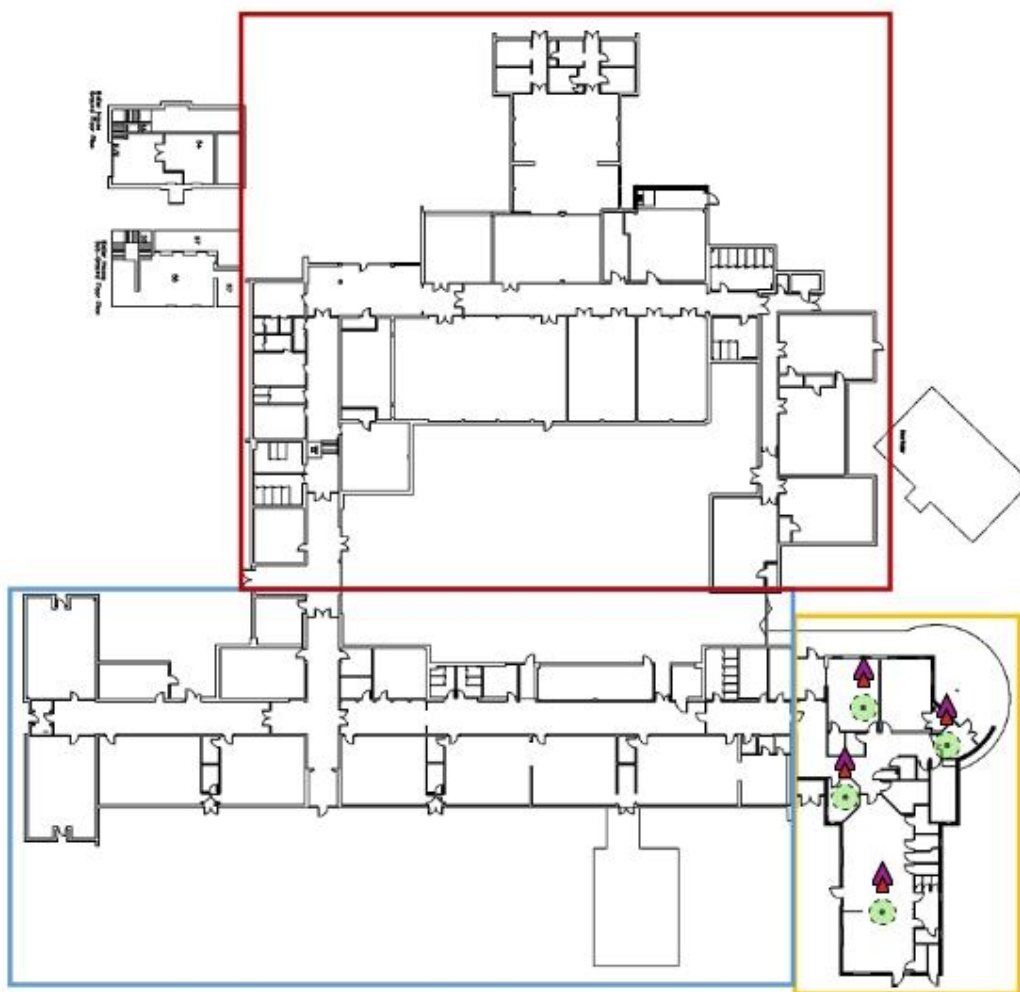
AP #	Access Point			
16	Aerohive AP130 (16)			
	802.11n	1	25 mW	Aerohive AP130 2.4GHz
	802.11ac	36	25 mW	Aerohive AP130 5GHz
17	Aerohive AP130 (17)			
	802.11n	1	25 mW	Aerohive AP130 2.4GHz
	802.11ac	36	25 mW	Aerohive AP130 5GHz
18	Aerohive AP130 (18)			
	802.11n	1	25 mW	Aerohive AP130 2.4GHz
	802.11ac	36	25 mW	Aerohive AP130 5GHz
19	Aerohive AP130 (19)			
	802.11n	1	25 mW	Aerohive AP130 2.4GHz
	802.11ac	36	25 mW	Aerohive AP130 5GHz
20	Aerohive AP130 (20)			
	802.11n	1	25 mW	Aerohive AP130 2.4GHz
	802.11ac	36	25 mW	Aerohive AP130 5GHz
21	Aerohive AP130 (21)			
	802.11n	1	25 mW	Aerohive AP130 2.4GHz
	802.11ac	36	25 mW	Aerohive AP130 5GHz
22	Aerohive AP130 (22)			
	802.11n	1	25 mW	Aerohive AP130 2.4GHz
	802.11ac	36	25 mW	Aerohive AP130 5GHz
23	Aerohive AP130 (23)			
	802.11n	1	25 mW	Aerohive AP130 2.4GHz
	802.11ac	36	25 mW	Aerohive AP130 5GHz




### Measured Access Points on 02 - Old Park - Plan - Zoned\_001 (KS2)

None.

### 03 - - Plan - Zoned\_001 (Patch)

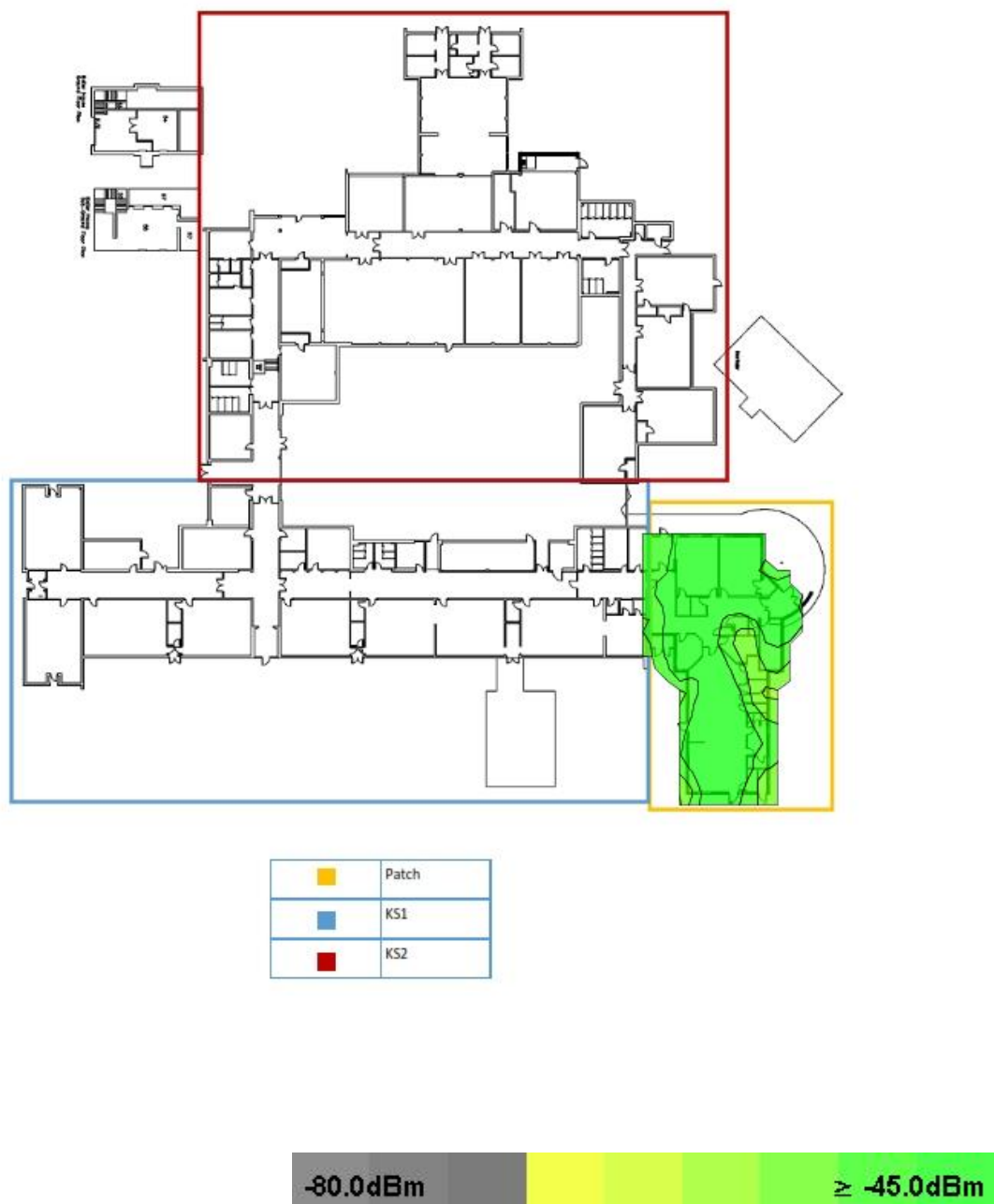
Survey routes and Access Points for 03 - - Plan - Zoned\_001 (Patch)



	Patch
	KS1
	KS2

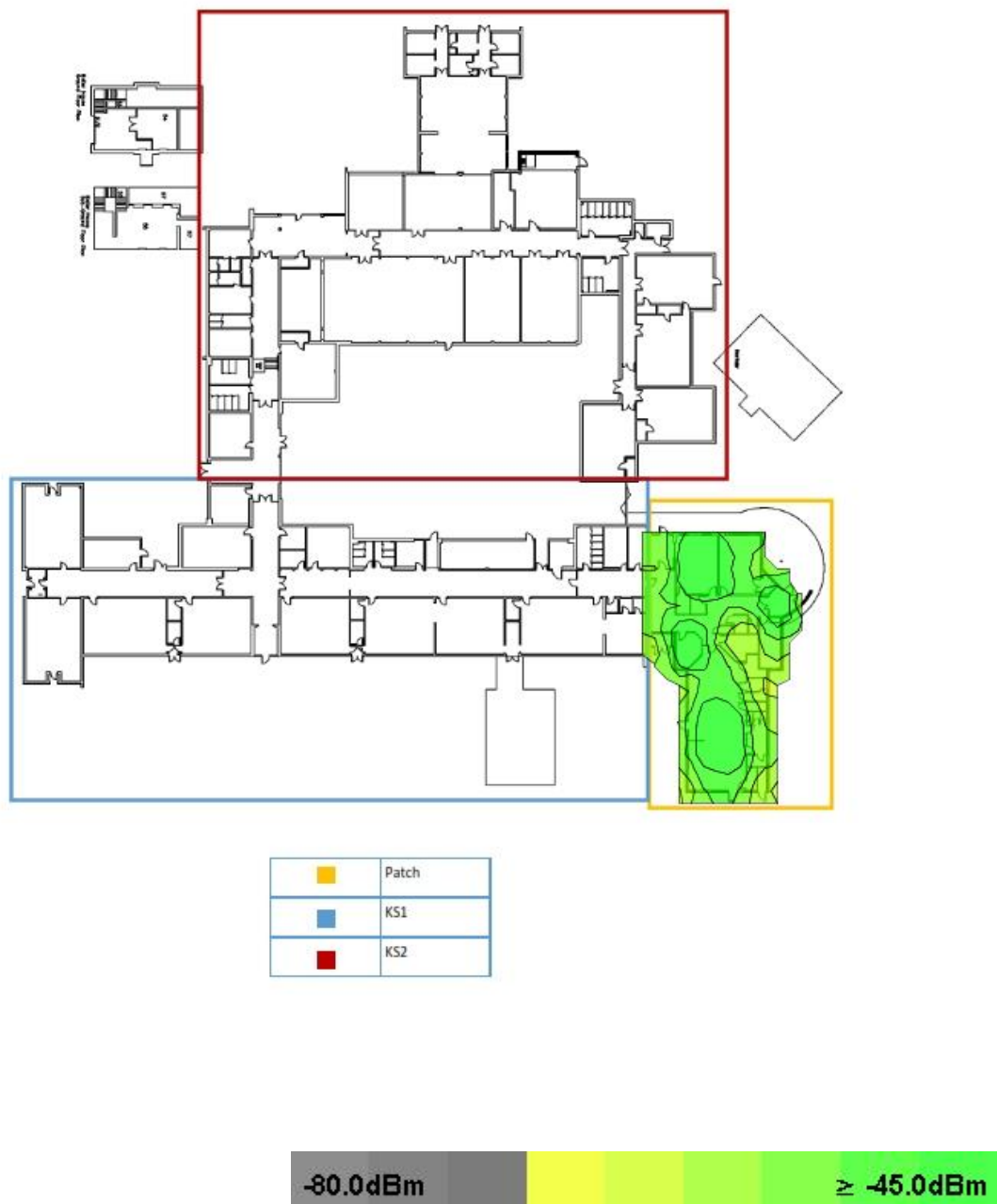
**Signal Strength for 03 - - Plan - Zoned\_001 (Patch) on 2.4 GHz band**

Signal Strength - sometimes called coverage - is the most basic requirement for a wireless network. As a general guideline, low signal strength means unreliable connections, and low data throughput.






**Signal Strength for 03 - - Plan - Zoned\_001 (Patch) on 5 GHz band**

Signal Strength - sometimes called coverage - is the most basic requirement for a wireless network. As a general guideline, low signal strength means unreliable connections, and low data throughput.



# Access Points on 03 - - Plan - Zoned\_001 (Patch)



	Patch
	KS1
	KS2



**My Access Points on 03 -  
(Patch)**

**- Plan - Zoned\_001**

**Simulated Access Points on 03 -**

**- Plan - Zoned\_001 (Patch)**

AP #	Access Point			
24	Aerohive AP130 (24)			
	802.11n	1	25 mW	Aerohive AP130 2.4GHz
	802.11ac	36	25 mW	Aerohive AP130 5GHz
25	Aerohive AP130 (25)			
	802.11n	1	25 mW	Aerohive AP130 2.4GHz
	802.11ac	36	25 mW	Aerohive AP130 5GHz
26	Aerohive AP130 (26)			
	802.11n	1	25 mW	Aerohive AP130 2.4GHz
	802.11ac	36	25 mW	Aerohive AP130 5GHz
27	Aerohive AP130 (27)			
	802.11n	1	25 mW	Aerohive AP130 2.4GHz
	802.11ac	36	25 mW	Aerohive AP130 5GHz

**Measured Access Points on 03 -**

**- Plan - Zoned\_001 (Patch)**

None.